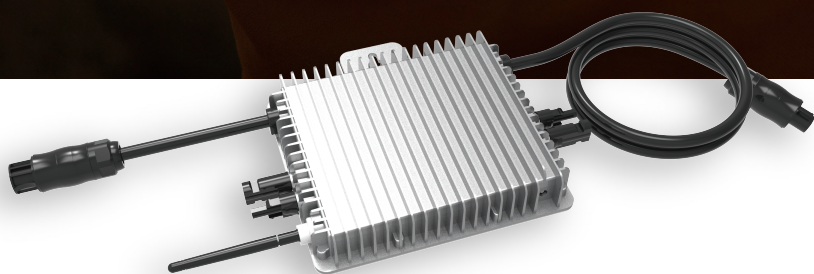


Microinverter

SUN600G3-US-220/EU-230

SUN800G3-US-220/EU-230 SUN1000G3-US-220/EU-230



IP67 protection degree, 10 years warranty



Zigbee or WIFI communication



Support reactive power compensation



2 MPP trackers, module level monitoring



Rapid shutdown function

Deye

Stock Code: 605117.SH

Model	SUN600G3-US-220	SUN600G3-EU-230	SUN800G3-US-220	SUN800G3-EU-230	SUN1000G3-US-220	SUN1000G3-EU-230
Input Data (DC)						
Recommended input Power (STC)	210~420W (2 Pieces)		210~500W (2 Pieces)		210~600W (2 Pieces)	
Maximum input DC Voltage	60V					
MPPT Voltage Range	25~55V					
Full Load DC Voltage Range (V)	24.5~55V		33~55V		40~55V	
Max. DC Short Circuit Current	2×19.5A					
Max. input Current	2×13A					
No.of MPP Trackers	2					
No.of Strings per MPP Tracker	1					
Output Data (AC)						
Rated output Power	600W		800W		1000W	
Rated output Current	2.7A	2.6A	3.6A	3.5A	4.5A	4.4A
Nominal Voltage / Range (this may vary with grid standards)	220V/ 0.85Un-1.1Un	230V/ 0.85Un-1.1Un	220V/ 0.85Un-1.1Un	230V/ 0.85Un-1.1Un	220V/ 0.85Un-1.1Un	230V/ 0.85Un-1.1Un
Nominal Frequency / Range	50 / 60Hz					
Extended Frequency / Range	45~55Hz / 55~65Hz					
Power Factor	>0.99					
Maximum units per branch	8		6		5	
Efficiency						
CEC Weighted Efficiency	95%					
Peak Inverter Efficiency	96.5%					
Static MPPT Efficiency	99%					
Night Time Power Consumption	50mW					
Mechanical Data						
Ambient Temperature Range	-40~65					
Size (mm)	212W×230H×40D (Without mounting bracket and cable)					
Weight (kg)	3.15					
Cooling	Natural cooling					
Enclosure Environmental Rating	IP67					
Features						
Compatibility	Compatible with 60~72 cell PV modules					
Communication	WIFI / Zigbee					
Grid Connection Standard	VDE4105, IEC61727/62116, VDE0126, AS4777.2, CEI 0 21, EN50549-1, G98, G99, C10-11, UNE217002, NBR16149/NBR16150					
Safety EMC / Standard	UL 1741, IEC62109-1/-2, IEC61000-6-1, IEC61000-6-3, IEC61000-3-2, IEC61000-3-3					
Warranty	10 years					