

# EMC & RF Evaluation Report

Applicant: BlauHoff B.V.

Address: Heemstraweg 123, 6651 KH Druten, THE NETHERLANDS

Product: Rechargeable Lithium ion Battery System

Model: BLH-5100

COMMERCIAL-IN-CONFIDENCE

Report Number: 64.771.21.60276.01B



China

Add value.  
Inspire trust.

RESPONSIBLE FOR	NAME	SIGNATURE	DATE
Prepared by	Chris Liang	<i>Chris Liang</i>	2022-11-11
Approved by	Matt Zhang	<i>Matt Zhang</i>	2022-11-11

Signatures in this approval box have checked this document in line with the requirements of TÜV SÜD Product Service control rules.

<b>EXECUTIVE SUMMARY</b> This product was found to be in compliance with	EN IEC 61000-6-1:2019, EN 61000-6-3:2007/A1:2011, EN 301 489-1 V2.2.3:2019, Draft EN 301 489-17 V3.2.2:2019, EN 300 328 V2.2.2:2019, EN 62311:2008, EN 50665:2017
---	---

TÜV SÜD Certification and Testing  
(China) Co., Ltd. Guangzhou Branch

5/F & East of 8/F., Communication  
Building, No.163, Pingyun Road, West  
of Huangpu Avenue, Guangzhou, China

Phone: +86 20 3815 3200  
Fax: +86 20 3832 0478  
[www.tuvsud.com](http://www.tuvsud.com)

ID Number: GCN\_SR EMC\_TR\_001  
Revision:2.0  
Effective:2019-12-26

TUV®



China

## Contents

<b>1</b>	<b>Report Summary .....</b>	<b>3</b>
1.1	Report Modification Record.....	3
1.2	Introduction.....	3
1.3	General Remarks .....	3
<b>2</b>	<b>Photographs .....</b>	<b>4</b>

## 1 Report Summary

### 1.1 Report Modification Record

Alterations and additions to this report will be issued to the holders of each copy in the form of a complete document.

Issue	Description of Change	Date of Issue
1	First Issue	2022-11-11

### 1.2 Introduction

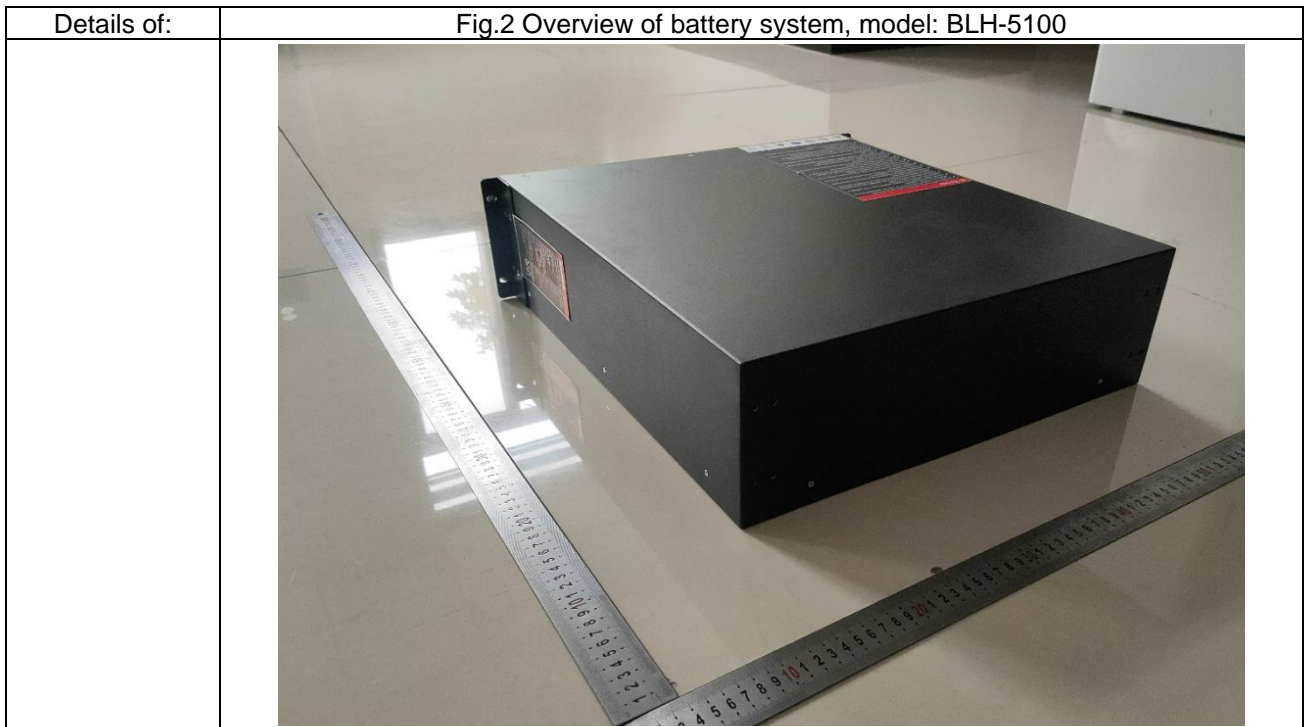
The information contained in this report is intended to show verification of the EMC Qualification.

Applicant : BlauHoff B.V.  
Address : Heemstraweg 123, 6651 KH Druten, THE NETHERLANDS  
Model Number(s) : BLH-5100  
Product Type : Rechargeable Lithium ion Battery System


### 1.3 General Remarks

Please refer to 64.771.21.60276.01, 64.771.21.60276.01R for completed information.  
The model CFE-5100 is technically identical to BLH-5100. This time, applicant wants to change the certificate holder and change the model name. After evaluation, no tests are needed to perform.  
Please refer to section 2 for detail photos.


## 2 Photographs

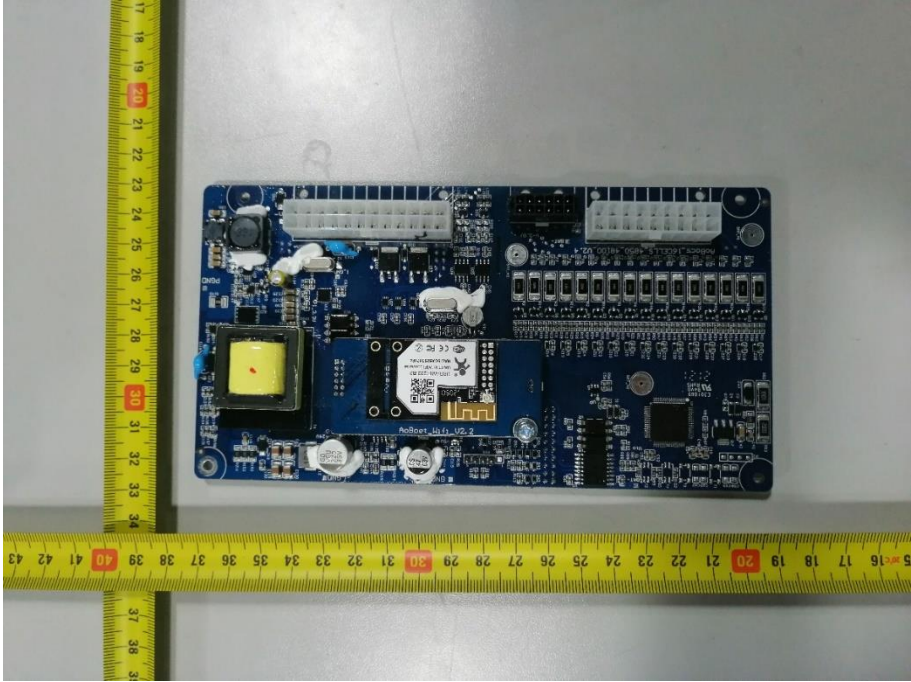


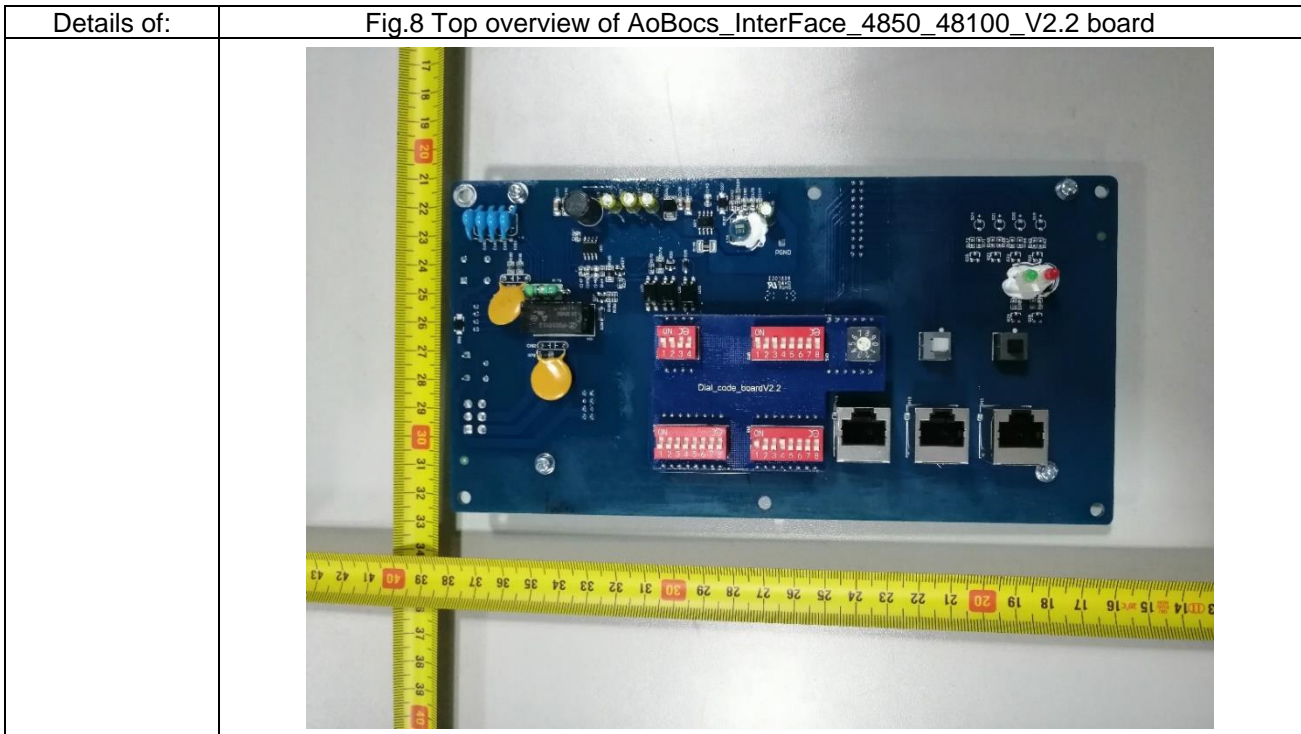
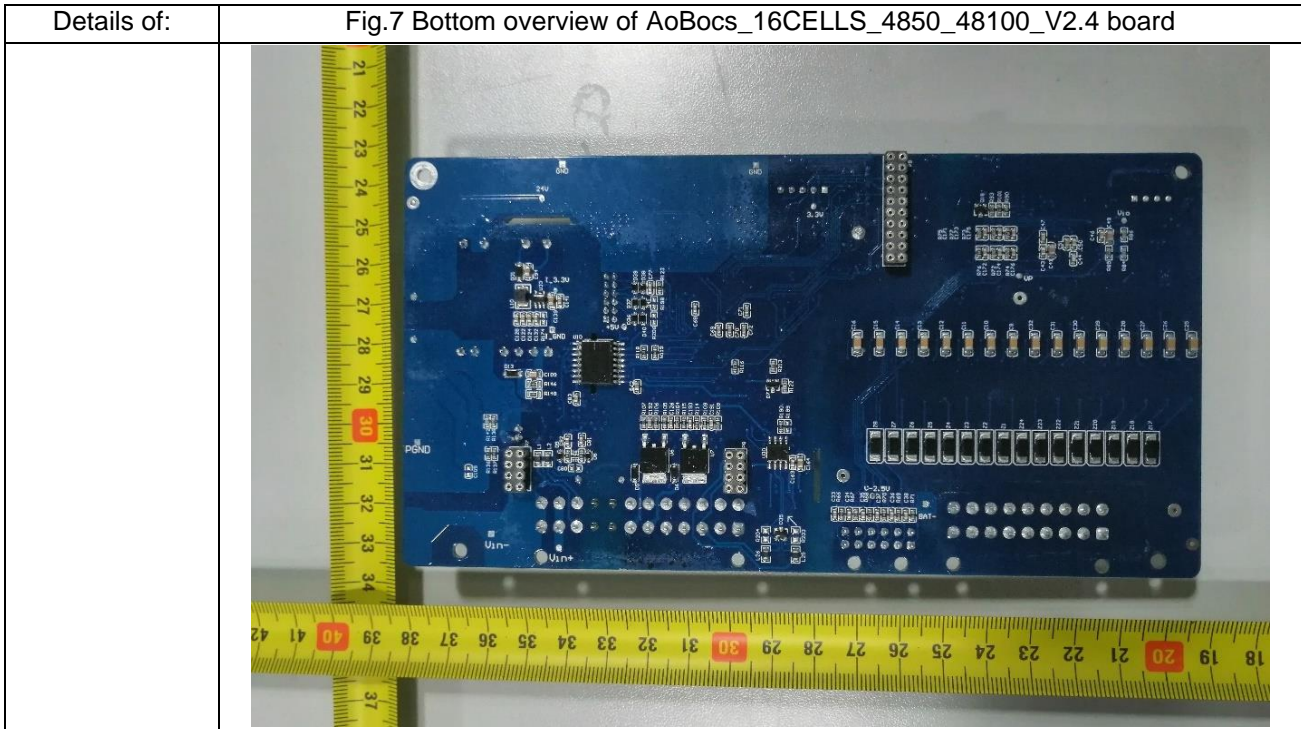
Details of:	Fig.3 Overview of battery system, model: BLH-5100
	

Details of:	Fig.4 Overview of battery system with enclosure removed, model: BLH-5100
	

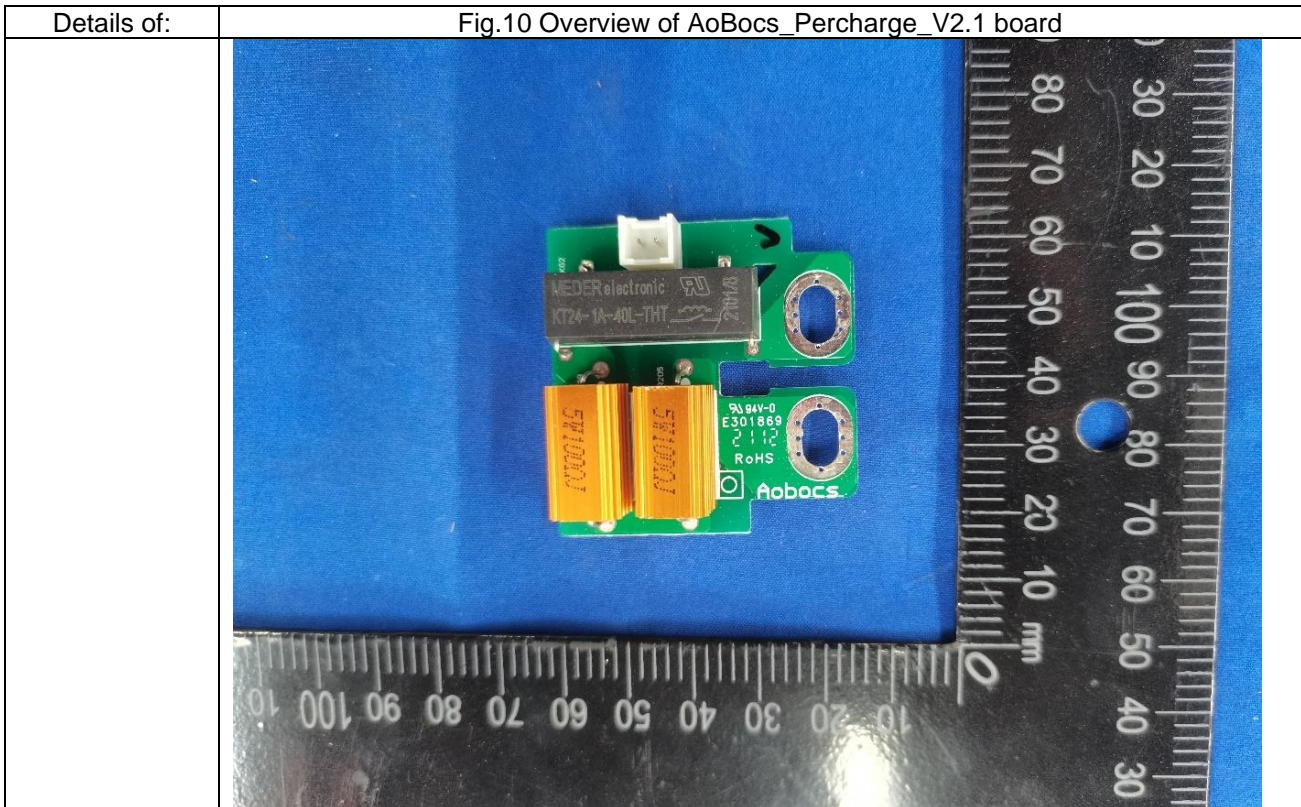
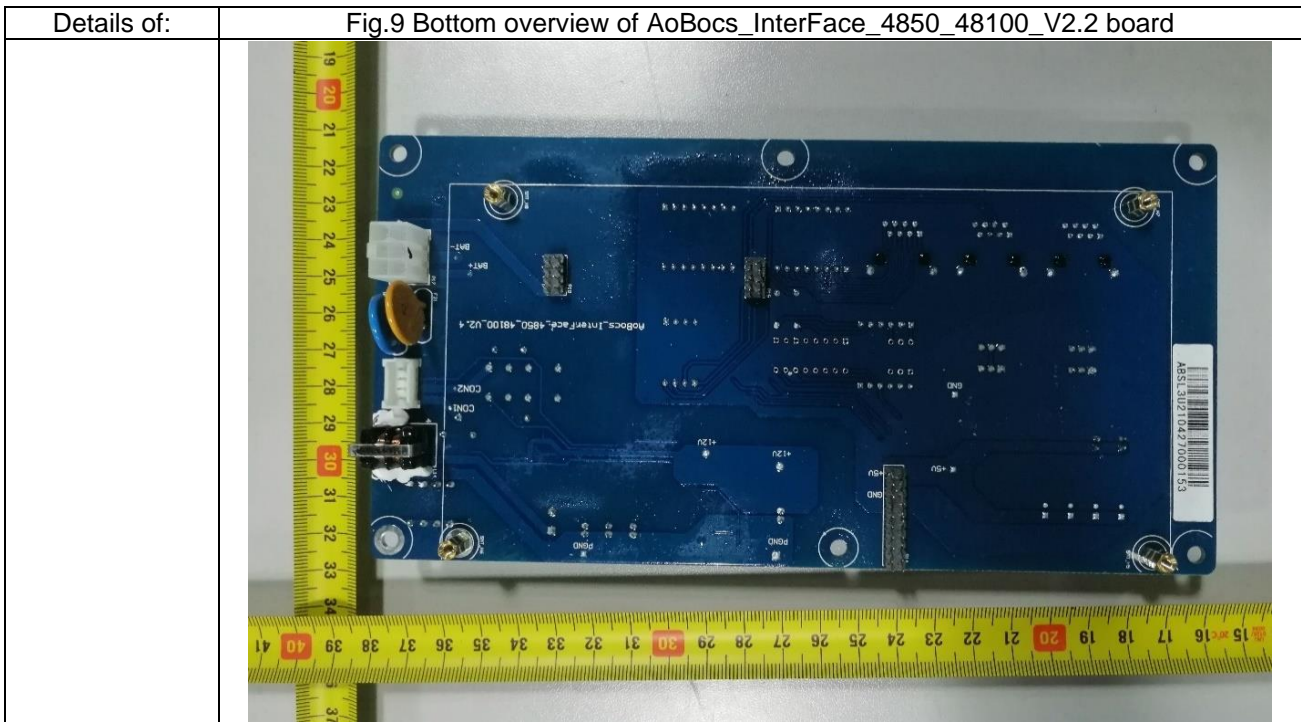


Details of:	Fig.5 Partial view of battery system with enclosure removed, model: BLH-5100
	

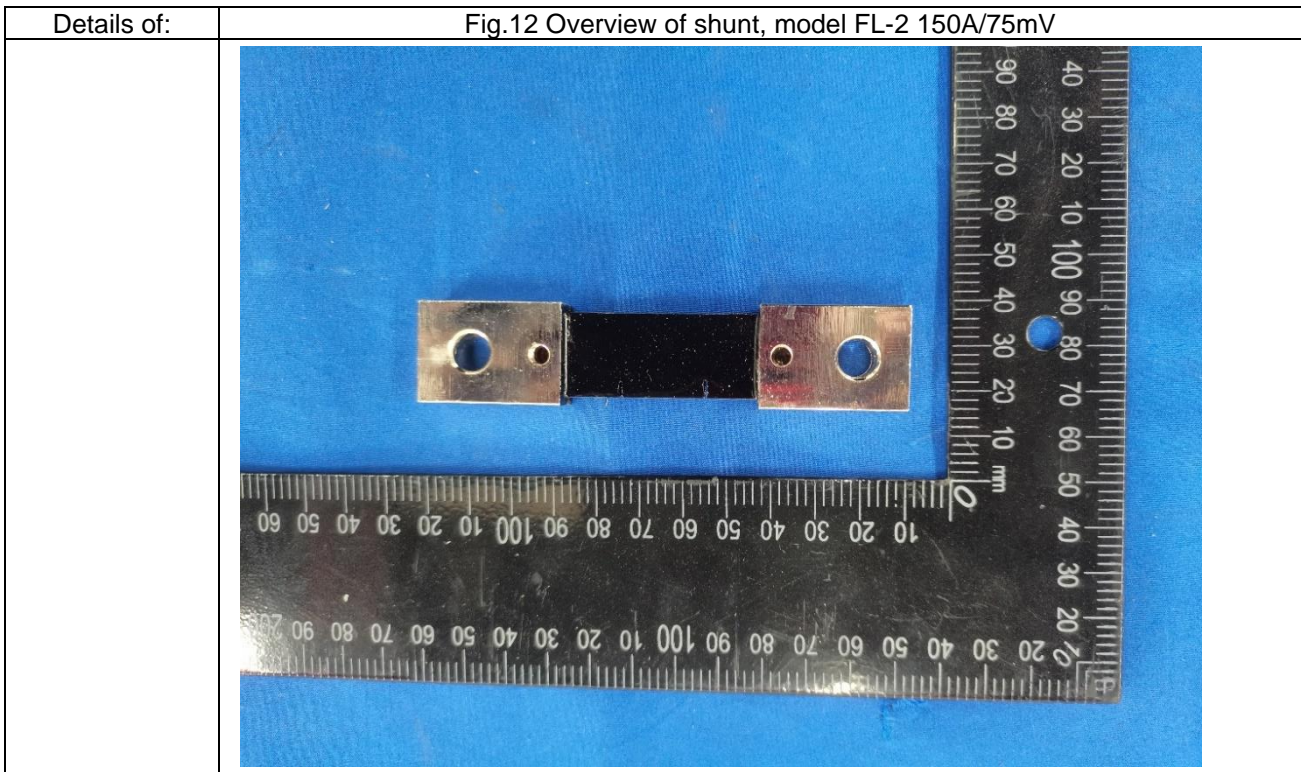
Details of:	Fig.6 Top overview of AoBocs_16CELLS_4850_48100_V2.4 board with AoBoet_Wifi_V2.2 board
	

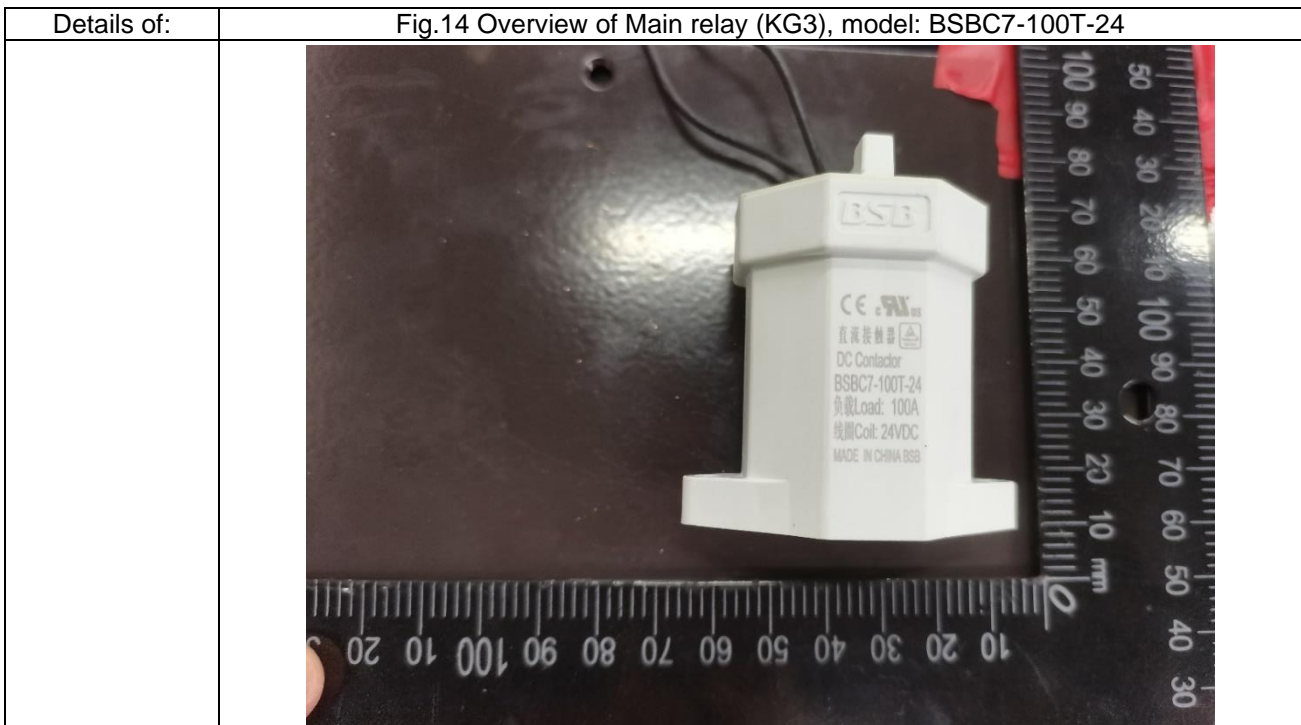
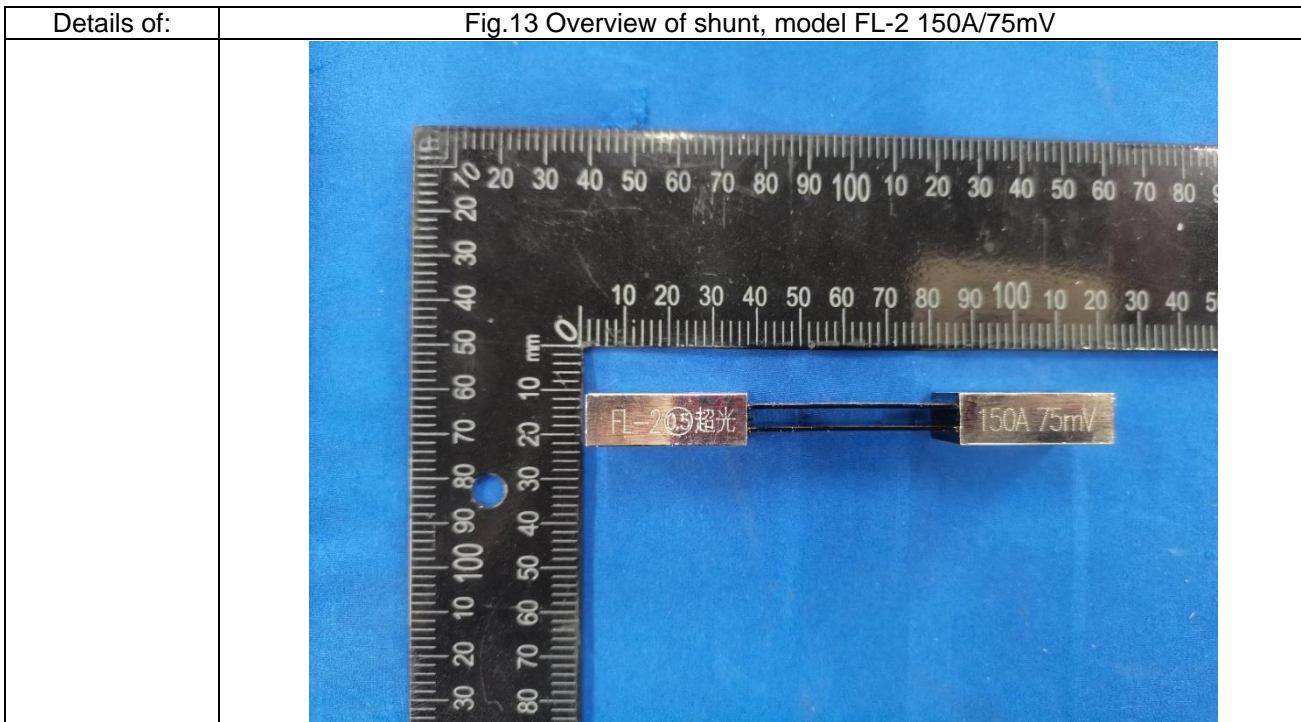







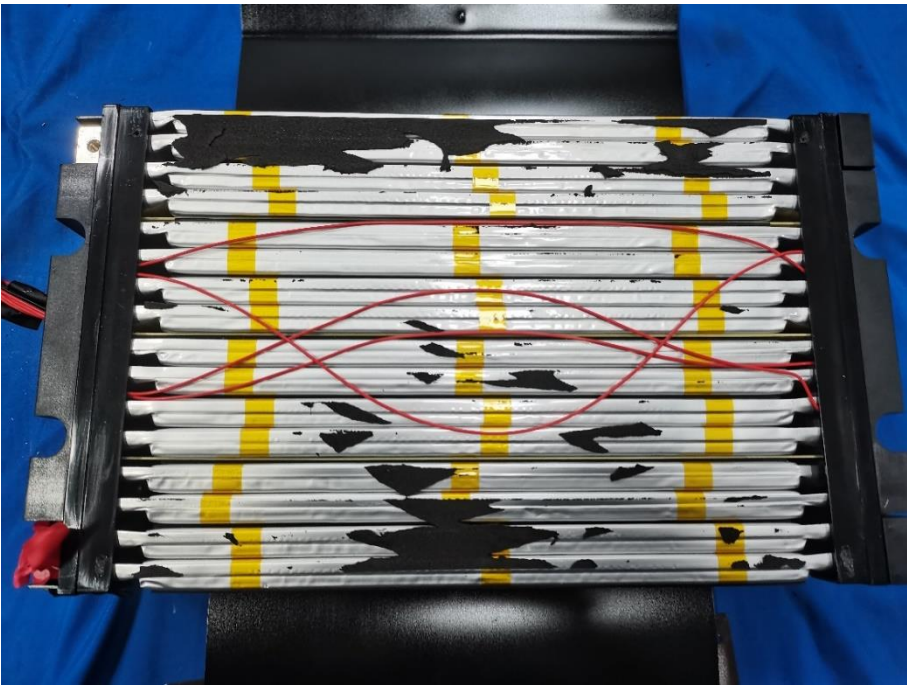


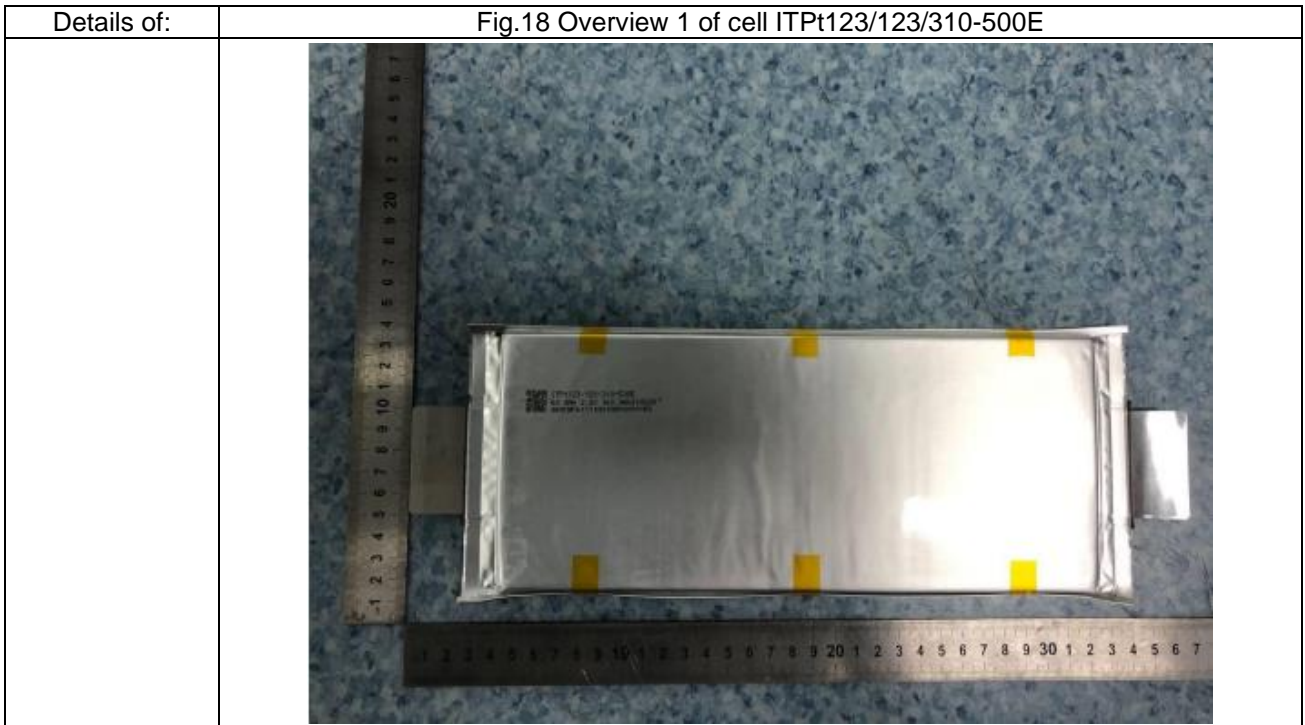
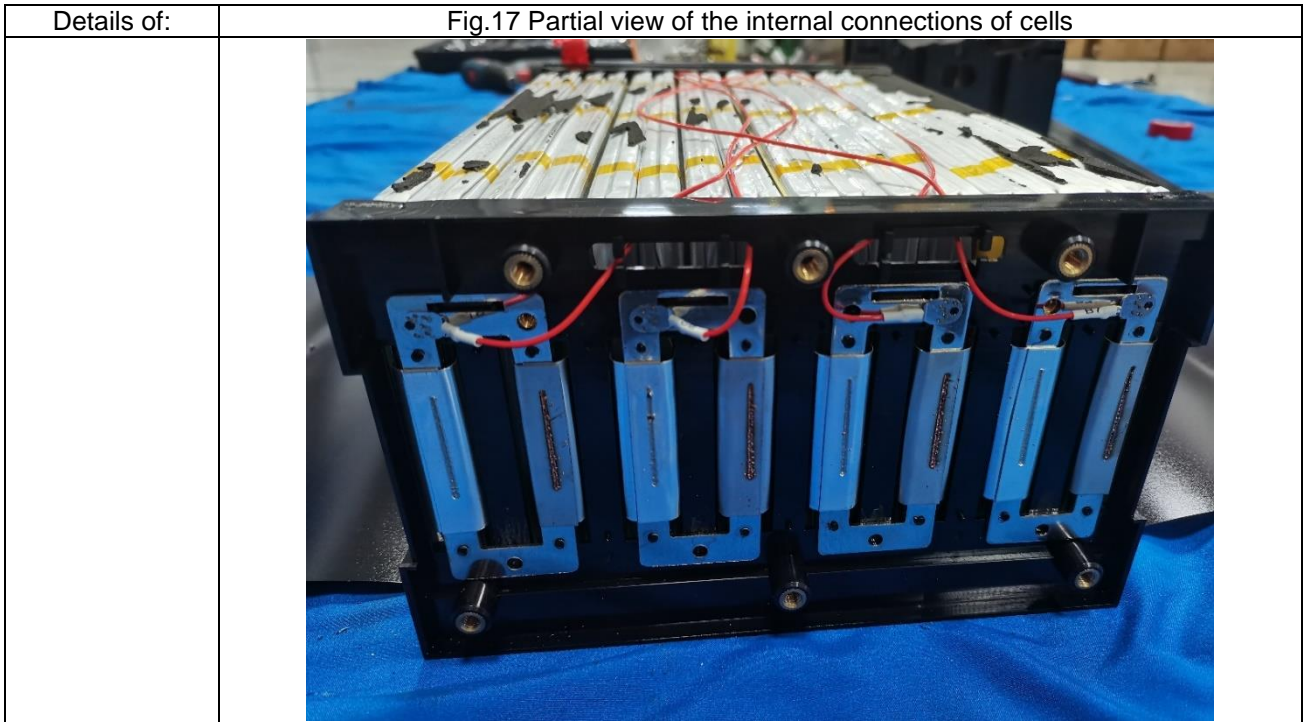




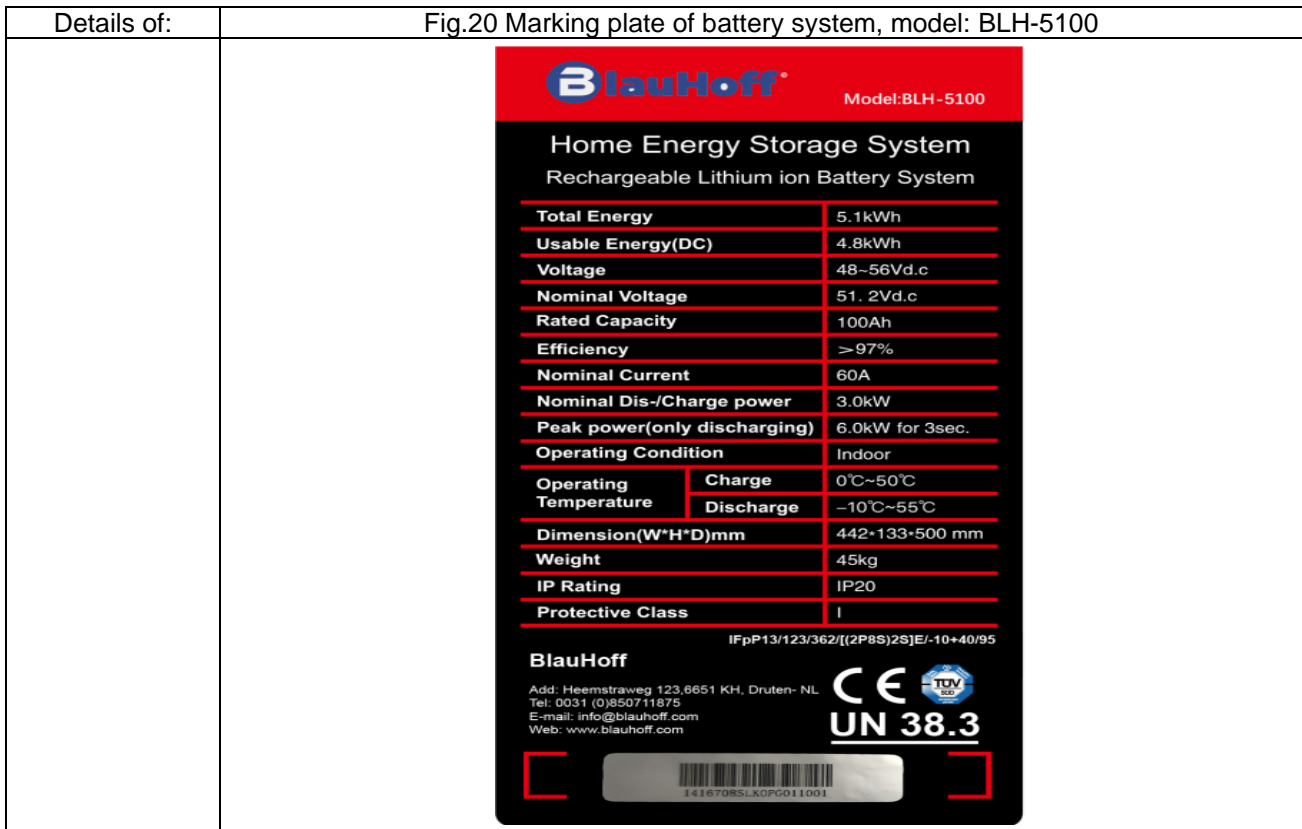
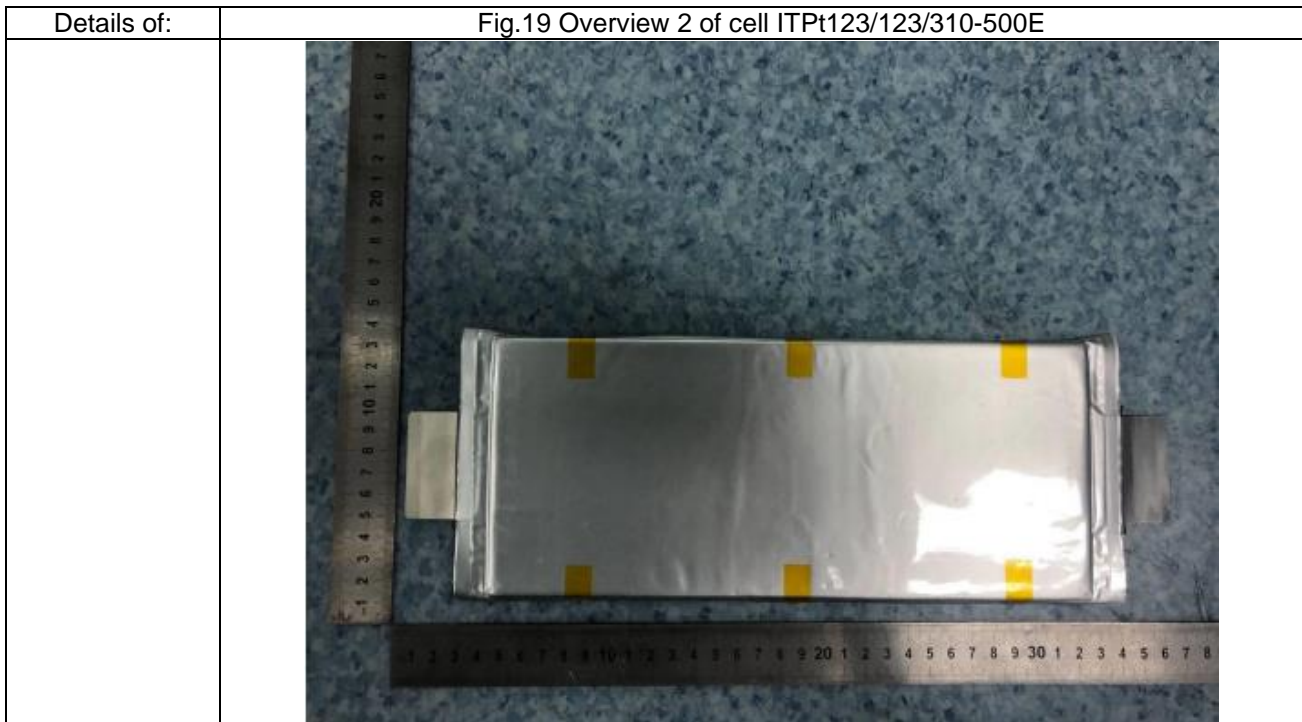


Details of:	Fig.15 Overview 1 of the internal connections of cells
	 A photograph showing the external view of a battery pack assembly. The pack is rectangular and housed in a black plastic frame. A metal ruler is placed above the pack for scale, with the text "SAFETY MADE IN P.R.C." visible on it. A red and black cable is connected to the left side of the pack. The entire assembly is set against a blue background.

Details of:	Fig.16 Overview 2 of the internal connections of cells
	 A photograph showing the internal view of the battery pack. It displays multiple layers of white battery cells held together by black plastic frames. Yellow vertical strips are used for cell alignment. Red wires are routed across the cells in a crisscross pattern, connecting them to the terminals on the left side. The background is blue.







--- End ---